

Terminal 3025



For various applications



- Weighing and taring
- Totalising and order picking
- Counting and count checking
- Checking
- Dynamic switching

Features

- ▶ Approvable, class III, up to 10.000 e
- ▶ Protection class IP 67
- ▶ 5 application programs: Weighing and taring, totalising and order picking, counting and count checking, checking, dynamic switching
- ▶ Fixed value memory for 999 fixed values per memory (option)
- ▶ 4 organization data memories, e.g. for article number, customer number, or shipping ticket number, 6 lines with 35 characters each
- ▶ Barcode management with 10-fold filter and multiscan function

Housing

- ▶ Compact housing made from 1.4301 stainless steel, protection class IP 67, suited for rough operating conditions
- ▶ Integrated power supply, 100 – 240 V, 50 60 Hz
- ▶ Pressure is compensated by gas-permeable membrane

Display & Tastatur

- ▶ Easy-to-read 3.5" TFT colour display (QVGA 320 x 240 pixels)
- ▶ Adjustable background color (green, white, light blue, yellow, blue, magenta and red), backlight dimmable from 30 - 100%
- ▶ Control function as control light
- ▶ Large weight display with 20 mm height
- ▶ Membrane keypad with alphanumeric key input for a convenient operation

Connectivity options

- ▶ Up to 2 analog weighing platforms can be connected
- ▶ Approvable resolution up to 10.000 e/3 x 3.000 e with corresponding load cells
- ▶ A digital reference scale can be connected via RS 232 interface

Interfaces

A total of up to 6 devices (digital reference scale, scanner, data logger, printer, etc.) can be connected to the 3025 terminal. The following interfaces are optionally available:

- ▶ 3 serial interfaces RS 232 / RS 422 / RS 485 (pluggable)
- ▶ 1 USB interface for PC keyboard, EDP, printer, data logger, keyboard wedge, etc.
- ▶ 1 Ethernet interface
- ▶ 1 Bluetooth interface (pluggable)
- ▶ 1 I/O card with 4 inputs and 6 outputs

USB applications available

for connections as

- ▶ PC keyboard
- ▶ Keyboard wedge
- ▶ Tape and label printers
- ▶ Dataloggers via USB stick
- ▶ IT integration

Further functions

- ▶ User password with login function
- ▶ IT management
- ▶ Remote Maintenance / Analysis

Options

- ▶ Memory card (Micro SD card) for alibi storage with a capacity for 2 million entries, as well as for the storage of fixed values and for the installation of software updates and for data backup
- ▶ Application software for data maintenance of read-only memories
- ▶ Relay box for voltages up to 250 V / 3 A (AC) and 24 V / 3 A (DC)
- ▶ Further options see accessories list on page 107-109

Order No.:	Configuration	Delivery time week
3025.01.001	Terminal with RS232 incl. internal measuring point	1
3025.01.002	Terminal with USB incl. internal measuring point	1

Expected to be available from March 2019



Optional

Accessories: Terminals with stainless steel housing

For catalog pages 103 – 106

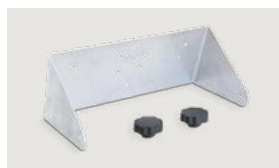
Accessories	Order No.:	3010	3010.22	3025	3035
		P No.	P No.	P No.	P No.
Stands	Stand bracket	2503.		30.001	30.001
	Bench stand made from stainless steel	2504.	08.001	08.001	08.001
	Bench stand made from stainless steel 800 mm	2504.	08.004	08.004	08.004
	Wall / bench bracket	2503.		30.002	30.002
	Wall / stand bracket, stainless steel	2503.	40.001	40.001	
	Floor stand with floor plate 200 x 200 mm, painted, approx. height: 1.150 mm	2504.	10.001		10.001
	Stand base, painted, 390 x 390 mm	2504.	11.001		11.001
	Floor stand with floor plate 200 x 200 mm, stainless steel, approx. height: 1.150 mm	2504.	20.001		20.001
	Stand base, stainless steel, 390 x 390 mm	2504.	21.001		21.001
Approvable Accessories	Alibi memory Micro-SD 4GB, as installation kit (3035 also for fixed value memory and software update)	2792.	40.001	40.001	40.001
	Alibi memory Micro-SD 4GB, installed (3035 also for fixed value memory and software update)	2792.	40.002	40.002	40.002
	Plug-in connection with ID chip as installation kit, approvable section point between scale and display, e.g. for in-ground installation	2550.	05.001	05.001	05.001
	Plug-in connection with ID chip installed, approvable section point between scale and display, e.g. for in-ground installation	2550.	05.002	05.002	05.002
	Plug-in interface with ID chip, straight plug D=20 mm installed, approvable section point between scale and display	2550.	05.004	05.004	05.004
Interfaces/Data cables	RS 232 interface installed	2563.	21.002	21.002	21.002
	Data cable, 9 pin connector 30xx – PC, cable length: 2 m	2550.	03.002	03.002	03.002
	Data cable, 9 pin connector 30xx – PC, cable length: 2 – 10 m	2550.	00.008	00.008	00.008
	RS 232 interface as installation kit	2563.	21.001	21.001	21.001
	1st RS 232 interface as installation kit	2550.		03.029	03.029
	3rd RS 232 interface installed	2563.	21.006	21.006	21.006
	3rd RS 232 interface as installation kit	2563.	21.005	21.005	21.005
	USB interface installed	2563.	47.002	47.002	
	USB data cable, connector 30xx – PC, cable length: 2 m	2550.	03.011	03.011	03.011
	USB interface as installation kit	2563.	47.001	47.001	
	USB cable kit in the unit, as installation kit / installed	2550.		03.026	03.026
	Ethernet interface installed, incl. 10 m patch cable	2563.	45.005	45.005	
	Ethernet interface as installation kit, incl. 10 m patch cable	2563.	45.004	45.004	
	Ethernet interface installed, incl. 10 m patch cable	2550.		03.025	03.025
	Ethernet interface as installation kit, incl. 10 m patch cable	2550.		03.024	03.024
	EthernetIP (CIP) interface 3010	2563.	48.002		
	RS 422 / RS 485 interface module installed	2563.	49.002	49.002	49.002
	RS 422 / RS 485 interface module as installation kit	2563.	49.001	49.001	49.001
	Analog interface installed	2563.	44.004		
	Analog interface as installation kit	2563.	44.003		
	Profibus DP, installed	2563.	42.008		25.002
	Profibus DP, as installation kit	2563.	42.007		25.001
	Profinet (2 ports), installed incl. module	2563.	42.006		26.002
	Profinet (2 ports), as installation kit incl. module	2563.	42.005		26.001
	WLAN module configured	2563.	10.004	10.004	10.004
	Bluetooth™ module	2563.	12.001	12.001	12.001
	Data cable for scanner / Precisa / printer 2795.20, cable length: 2 m	2550.	03.010	03.010	03.010
	Data cable for Vibra to 3035	2550.			03.023

Accessories		Order No.:	3010 P No.	3010.22 P No.	3025 P No.	3035 P No.
	Data cable for Sartorius to 3035, circular connector	2550.			03.031	03.031
	Data cable for Sartorius to 3035, 25 pol.	2550.			03.036	03.036
	Data cable for Radwag to 3035	2550.			03.032	03.032
	Measuring point installed (3035: Measuring point for filter type 2)	2554.	40.005	40.005		10.002
	Measuring point installed (3025/3035: Measuring point for filter type 3)	2554.			10.005	10.005
	Measuring point as installation kit (3035: Measuring point for filter type 2)	2554.	40.004	40.004		10.001
	Measuring point as installation kit (3025/3035: Measuring point for filter type 3)	2554.			10.004	10.004
I/O	I/O module relay, as installation kit with socket and cable fitting (3010 only with cable fitting)	2563.	20.004		20.004	20.004
	I/O module relay, installed with socket	2563.			20.005	20.005
	I/O module relay, installed with cable fitting	2563.	20.006		20.006	20.006
	I/O module PNP, as installation kit with socket and cable fitting	2563.	20.007		20.007	20.007
	I/O module PNP, installed with socket	2563.			20.008	20.008
	I/O module PNP, installed with cable fitting	2563.	20.009		20.009	20.009
Software	CD PC application software for transferring fixed values (compatible with Windows 7, 8, 10)	2564.			12.002	12.002
	CD PC service software for print format design, dataset, printer installation (compatible up to Windows 10)	2564.	10.003	10.003	10.003	10.003
	PC software Scale Connecting, software for transferring scale data to PC-based software (compatible up to Windows 10)	2564.	20.002	20.002	20.002	20.002
	Scale Connecting Plus, extensive software for transferring scale data to PC-based software (with activation code, compatible up to Windows 10)	2564.	20.005	20.005	20.005	20.005
	Software for linking scale to SAP R/3, to link scale via RS 232, USB or Ethernet	2564.	20.006		20.006	20.006
	Keyboard wedge USB, for RS 232 scale interface to PC USB interface (additionally required is a data cable, 9 pin connector 30xx – PC)	2563.	00.008	00.008		
	USB adapter cable for PC keyboard / datalogger	2550.			03.027	03.027
	USB converter USB to RS 232	2550.	03.020	03.020	03.020	03.020
Displays/Control lights	Large display LED 100 mm, 5 pin plug with 15 m cable	2562.	01.003		01.003	01.003
	Second display LED 38 mm, 5 pin plug with 15 m cable	2562.	12.001		12.001	12.001
	Second display LCD 20 mm, 5 pin plug with 2 m cable	2562.	70.002		70.002	70.002
	Control light 30xx, interface cable 1.5 m (I/O module required)	2551.	50.001		50.001	50.001
	I/O module, as installation kit for control light 2551.50.001	2563.	40.011		20.010	20.010
	I/O module, installed for control light 2551.50.001	2563.	40.012		20.011	20.011
	Control light 30xx, power supply cable 2 m, interface cable 1.5 m (I/O module required)	2551.	40.001		20.001	20.001
Printers/Scanners	Label printer with cut-off device, print width up to 104 mm (thermo-direct), RS 232	2795.	12.001	12.001	12.001	12.001
	Label printer with cut-off device, print width up to 104 mm (thermo-direct), USB	2795.	12.003	12.003	12.003	12.003
	Label printer, print width up to 108 mm (thermo-direct)	2795.	20.001	20.001	20.001	20.001
	Data cable for scanner / Precisa / printer 2795.20, cable length: 2 m	2550.	03.010	03.010	03.010	03.010
	Tape printer, paper width up to 76 mm (9 pin), RS 232	2795.	14.001	14.001	14.001	14.001
	Printer cable, 25 pins for printer 2795.14 and 12.001, cable length: 2 m	2550.	03.007	03.007	03.007	03.007
	Printer cable, 25 pins for printer 2795.14 and 12.001, cable length: 2 – 10 m	2550.	00.009	00.009	00.009	00.009
	Tape printer, paper width up to 76 mm (9 pin), USB	2795.	14.003	14.003	14.003	14.003
	USB printer cable, 4 pins for printer 2795.14.003, cable length: 1.8 m	2550.			03.028	03.028
	Portable scanner, wire connection, incl. bench stand bracket and power supply	2553.	20.003	20.003	20.003	20.003
	Wireless portable scanner Bluetooth™, incl. rechargeable battery, base station, RS 232 cable and power supply	2553.	23.002	23.002	23.002	23.002
	Print format design, customer-specific	5751.	01.001	01.001	01.001	01.001
	Dataset format, customer-specific	5751.	01.002	01.002	01.002	01.002
	Dataset/print format installation of existing or provided data	5751.	01.004	01.004	01.004	01.004

Accessories	Order No.:	3010	3010.22	3025	3035
		P No.	P No.	P No.	P No.
Relay box (I/O module required) 2 outputs / 4 inputs	2552.	40.001	40.001	30.001	30.001
Relay box (I/O module required) with power supply, 6 outputs / 4 inputs	2552.	41.002		31.001	31.001
DC / DC converter 12 V - 60 V as installation kit with 5 m cable (3020 only 12 V)	2561.	40.003			
DC / DC converter 12 V - 60 V installed with 5 m cable (3020 only 12 V)	2561.	40.004			
UK power supply installed	2570.	01.001		01.001	01.001
US power supply installed	2570.	01.002		01.002	01.002
CH power supply installed	2570.	01.003		01.003	01.003
Protective cover	2507.	01.002	01.002	01.002	01.003
Name plate, blank	2512.	09.001		07.001	07.001
Name plate, with entries	2512.	09.002	05.002	07.002	07.002
Control/database module	2563.				27.002

Please include the Order No. + P No. when placing your purchase order.

Images Accessories



Wall bracket



Alibi memory



Interface



Printer and data cable



Portable scanner



Portable wireless scanner



Bluetooth™ module



Measuring point



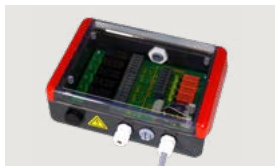
Plug-in connection



I/O module



Control light



Relay box



Profibus



Ethernet interface



DC/DC converter

Possible combinations Terminal 3025

Option / Interface	Can be combined with the following options							
	Measuring point 1	Measuring point 2	RS 232 decoupled	USB	RS 422 / RS 485	Ethernet	Bluetooth	I/O card
Measuring point 2	●	■	◇	○	□	○	□	○
RS 232 decoupled	●	○	□	○	□	○	□	○
USB	●	○	◇	■	□	○	□	○
RS 422 / RS 485	●	○	□	○	△	○	△	○
Ethernet	●	○	◇	○	□	■	□	○
Bluetooth	●	○	□	○	△	○	■	○
I/O card	●	○	◇	○	□	○	□	■

● Included as standard

○ Option can be used at any time

△ One additional option can be connected

□ Two additional options can be connected

◇ Three additional options can be connected

■ Combination not possible